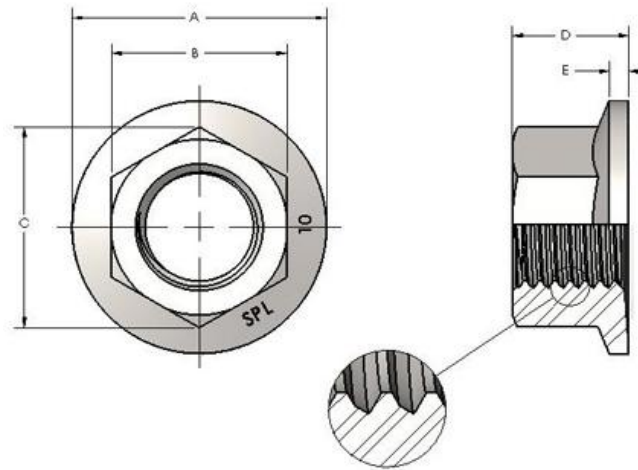


Flange Nut Model (for the Strap Clamp Assembly)**Basic Model**

- Produce a model of the M12 Flange Nut; try to produce using only four features, an extrude, revolve, revolve cut and the hole with hole wizard.
- Add a 1mm fillet to the outer edge of the flange to finish off the model.
- Model with the origin at the top face and at the centre of the hole.
- Set the material to carbon steel.

Check the mass properties; mass should equal 25.48 grams (hole wizard option set to cosmetic thread).

Nut Size	A	B	D	E
M5	11.8	8.00	5.00	1
M6	14.20	10.00	6	1.10
M8	17.90	13.00	8	1.20
M10	21.80	15.00	10	1.50
M12	26.00	19.00	12.00	1.80
M14	29.90	21.00	14.00	2.10
M16	34.50	24.00	16.00	2.40
M20	42.80	30.00	20	3.00

Extended Work (C&G Parametric CAD Lv2 Work)

- Produce manual configurations to the table above, the complete the model will contain eight configurations.